

REMOVAL AND INSTALLATION

Selector Lever Cable and Bracket

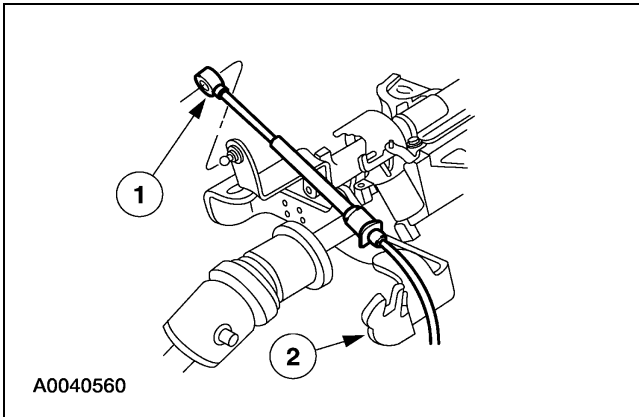
Removal and Installation

All vehicles

- NOTE:** To prevent shift cable damage, do not apply force to the transmission shift cable assembly between the steering column shift tube bracket and the steering column bracket.

Disconnect the transmission shift cable from the steering column.

- 1 Disconnect the transmission shift cable from the steering column shift tube lever.
- 2 Carefully lift the locking tab and disconnect the transmission shift cable from the steering column bracket.



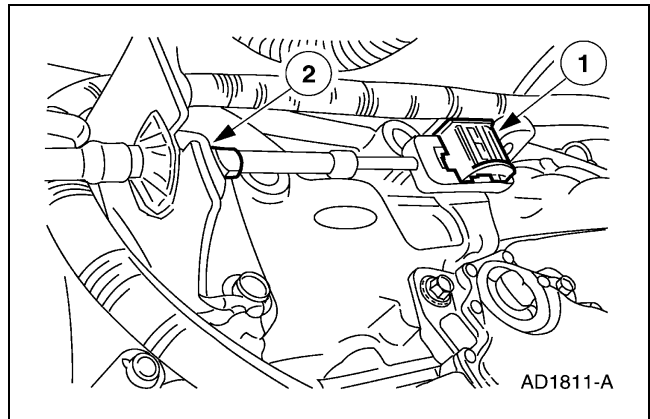
2. Disconnect the cable push pin from the stud in the bulkhead.
3. Push the rubber grommet and transmission shift cable through the bulkhead.
4. With the vehicle in NEUTRAL, position it on a hoist. For additional information, refer to Section 100-02.

4R100 transmission

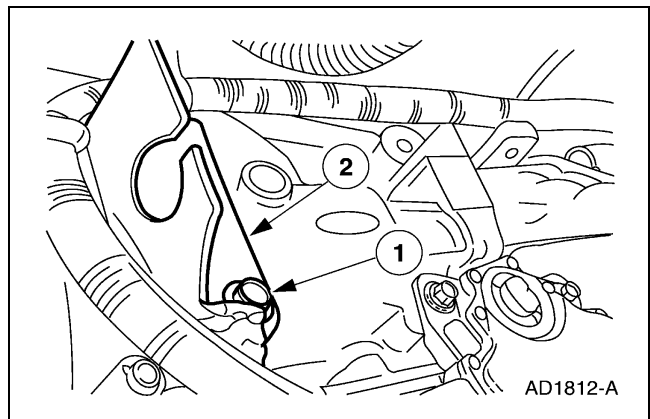
- NOTE:** To prevent shift cable damage, do not apply force to the transmission shift cable assembly between the manual control lever and the transmission shift cable bracket.

Remove the transmission shift cable from the transmission.

- 1 Disconnect the transmission shift cable from the manual control lever.
- 2 Depress the locking tabs to release the transmission shift cable and disconnect the transmission shift cable from the transmission shift cable bracket.

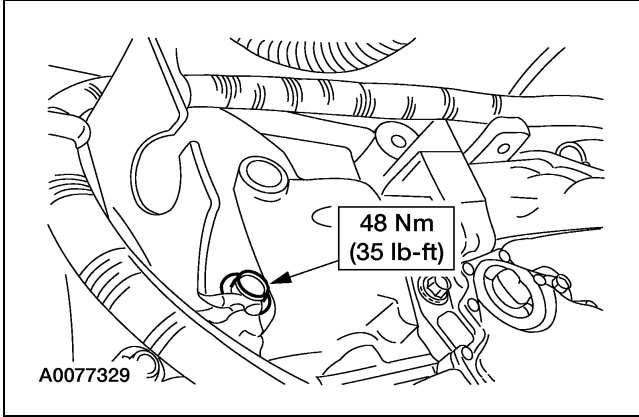


6. Remove the shift cable bracket from the transmission.
 - 1 Remove the bolts.
 - 2 Remove the shift cable bracket.

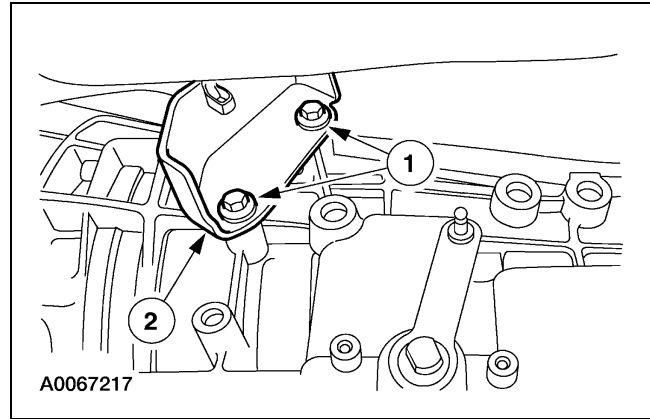


REMOVAL AND INSTALLATION (Continued)

7. To install, reverse the removal procedure.
- Adjust the shift cable. For additional information, refer to Cable and Bracket Adjustment in this section.



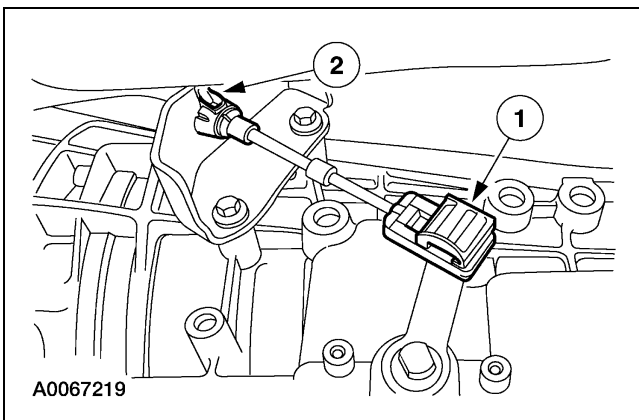
9. Remove the shift cable bracket from the transmission.
- Remove the bolts.
 - Remove the shift cable bracket.

**TorqShift transmission**

8. **NOTE:** To prevent shift cable damage, do not apply force to the transmission shift cable assembly between the manual control lever and the transmission shift cable bracket.

Remove the transmission shift cable from the transmission.

- Disconnect the transmission shift cable from the manual control lever.
- Depress the lock tabs to release the transmission shift cable and disconnect the transmission shift cable from the transmission shift cable bracket.



10. To install, reverse the removal procedure.
- Adjust the shift cable. For additional information, refer to Cable and Bracket Adjustment in this section.

