

Ford Super Duty Auxiliary Reverse Lamps

2004 F250 4x4 XLT Sport Crew Cab 5.4L

[Back to 2004 F250 Main Page](#)

[Click Here for a PDF version of this article](#)

A while back I [installed a backup camera](#) and I use it all the time. Only problem is, its not so great in the dark because the truck's reverse lamps don't provide much light.

So, I decided to install a small set of driving lights on my trailer hitch to solve this problem.

I bought the smallest set of lights that Wal Mart sells, ~\$20. 55W halogens that are 2-3/8" by 1-1/2".



Next was to decide where to mount the switch. I've [installed a lot of switches](#) on my dash, but I've been saving this spot. Now was the time to use it.



I searched around for an oval rocker switch that didn't stick out from the dash like most do. I ended up buying this one on ebay. Its a decent switch but it doesn't have that quality "click" feeling when you switch positions on it. So, time will tell how long it lasts.

***** UPDATE 12/13/12 -- This switch lasted about a year before failing so I replaced it with a higher quality switch. See below! *****



The new switch is a higher quality unit made by CW Industries, part number GRB278B802BR1. I bought mine from Digikey (PN CW137-ND) for \$3.75.



This switch is smaller, so I had to mount it in the original plug for the oval hole in the dash.



Marked it and cut it out with my Dremel tool.



I drilled & tapped a couple 10-32 holes on each side of my trailer hitch to mount up the lights.

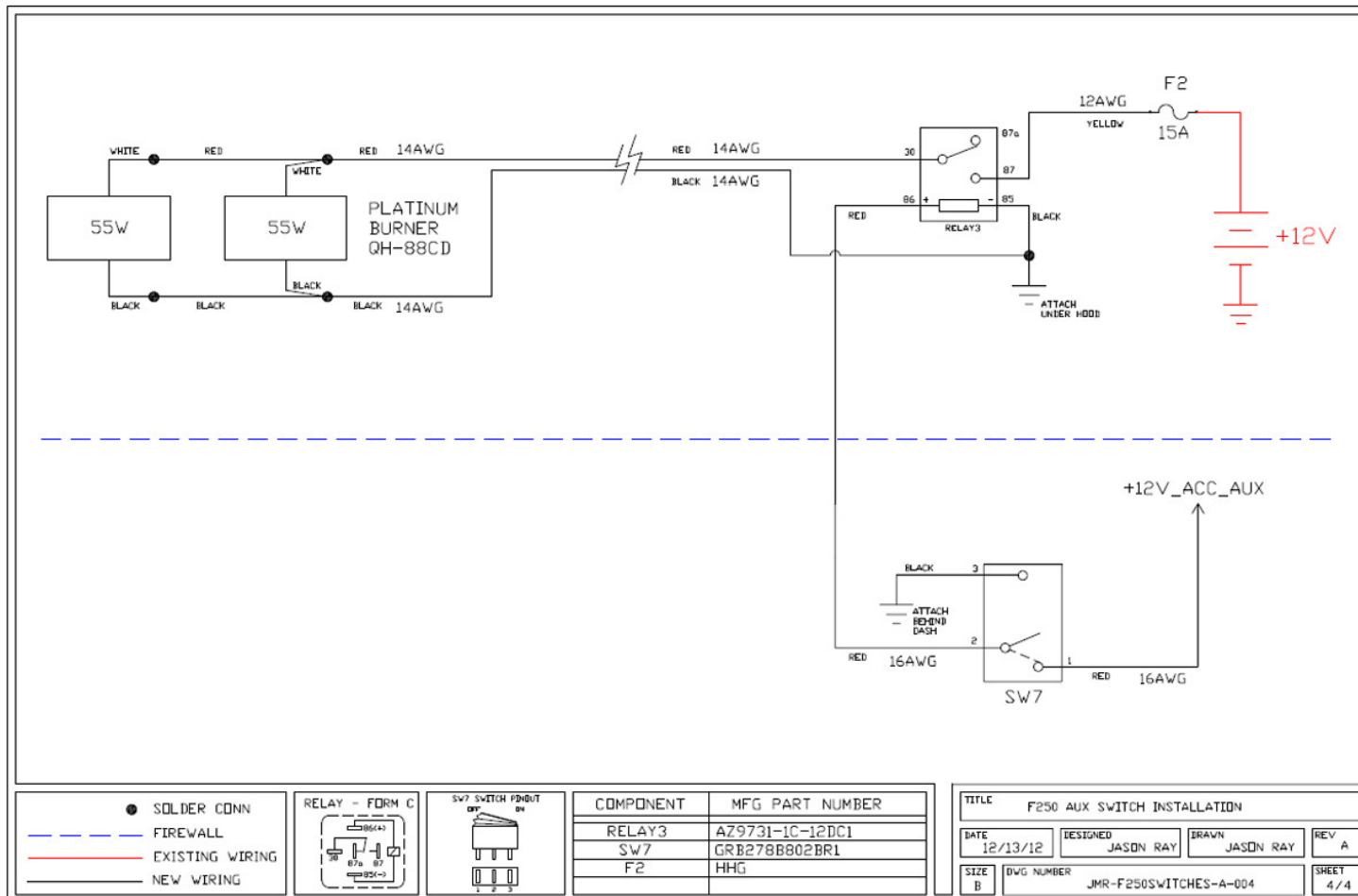






Now for the wiring. I used the switch on the dash to trigger a relay mounted under the hood, which provided power to the lights.

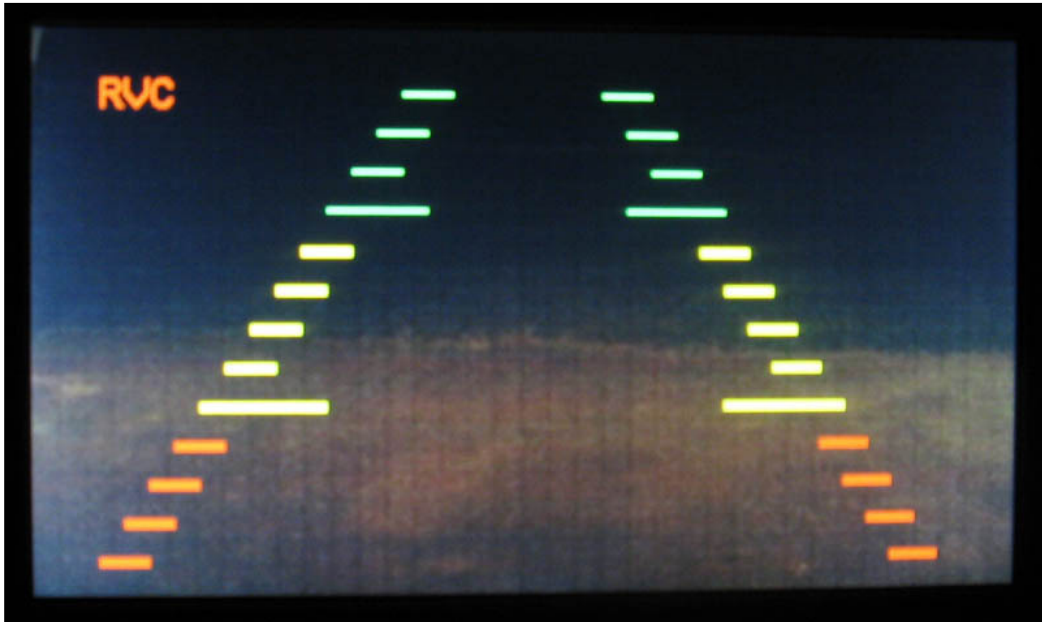
Here's the schematic of how I wired them up.

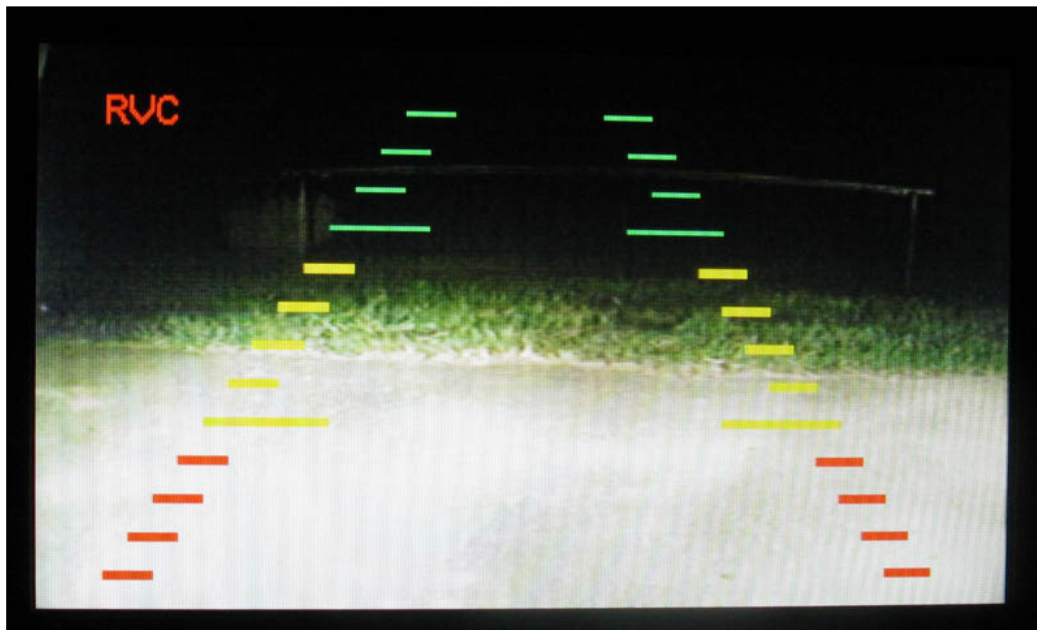


Now there's much more light out the back when needed.



Now for the results... before and after pics of my backup camera at night.





Questions or Comments? Email jmray@frontiernet.net